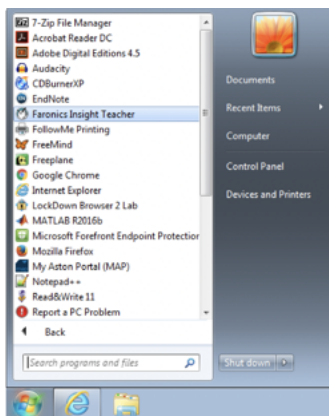


## Faronics Insight

Faronics Insight is a tool for tutors running sessions in computer labs. It enables you to:

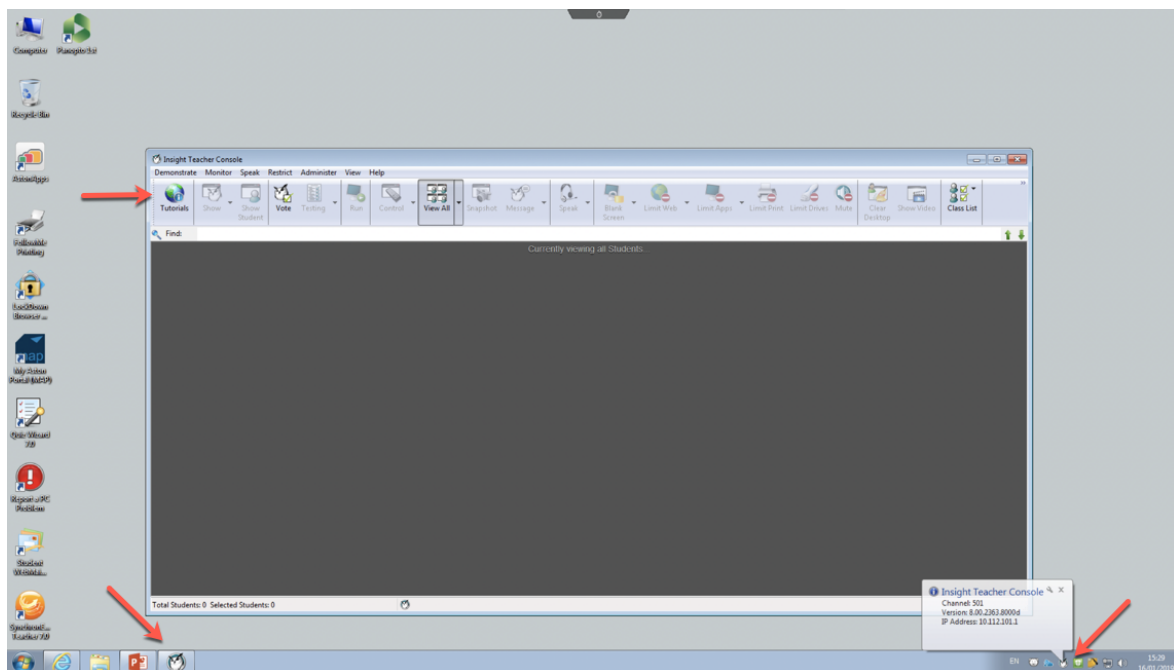
- Display your screen on all the students' screens;
- Show a video to all students;
- Blank all students' screens;
- See thumbnails of all students' screens to check they are on-task;
- View an individual student's screen full-size;
- Control the student's PC and disable their keyboard and mouse;
- Take snapshots of student screens
- Send messages to all or selected students;
- Limit access to the web, specified apps, printing;
- Turn on all the PCs in the lab.

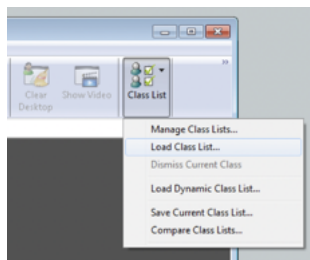


This guide will not cover all these features since Faronics provides good Tutorials.

Start **Faronics Insight Teacher** from the **Start** menu of the tutor's PC.

You can access the **Insight Teacher Console** at any time by selecting either the program icon (an owl) on the task bar or the small icon in the system tray. Note the **Tutorials** button.

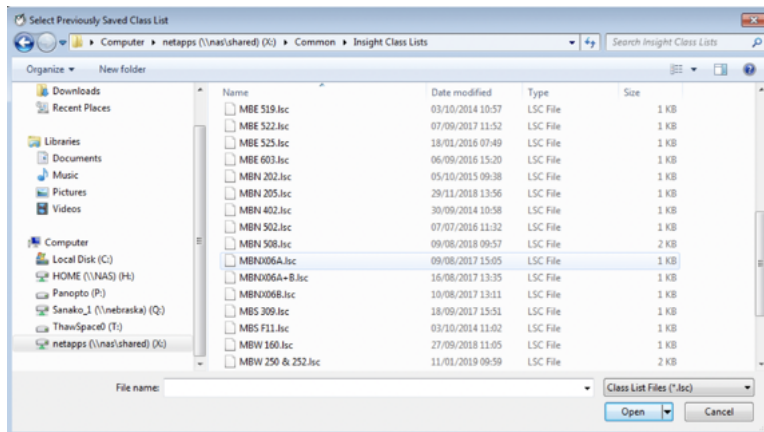




You need to load the correct class list so that you can view and control the computers in your lab. Note that you cannot ever view or control computers in another lab.

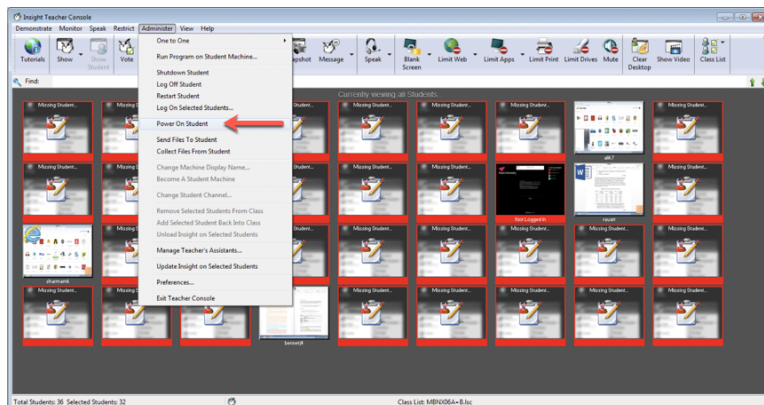
Click on the **Class List** button and select **Load Class List**.

You will find all the class lists on drive X: (netapps) in the folder: **X:/Common/Insight Class Lists**



Choose your lab's class list and click **Open**.

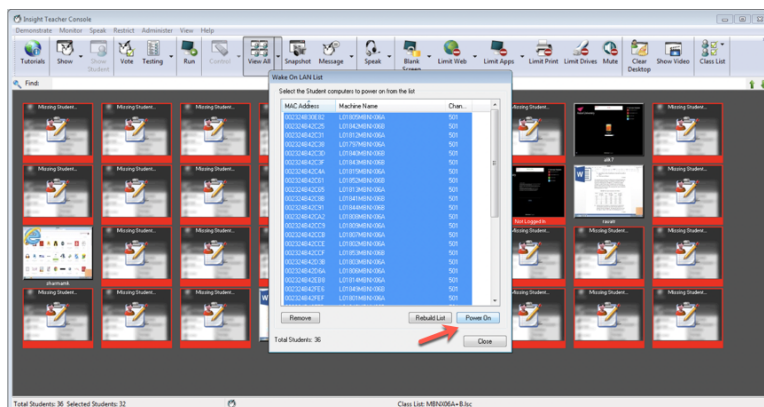
Note that some labs can be combined by opening a movable partition, and have a special class list for that e.g. MBNX06A+B

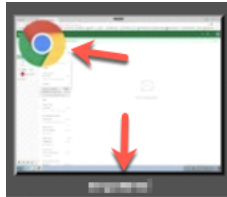
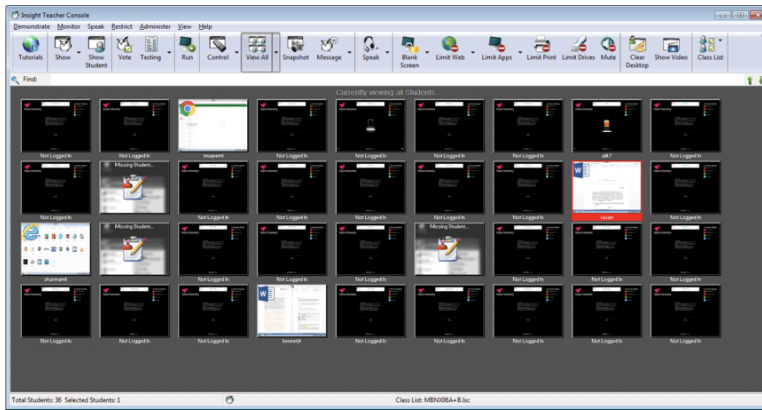


You will see thumbnails of all the PC screens – most of these show 'missing student' as the PCs are not switched on. Press **CTRL-A** to select ALL the PCs and then hold down **CTRL** and click to deselect any that are already on.

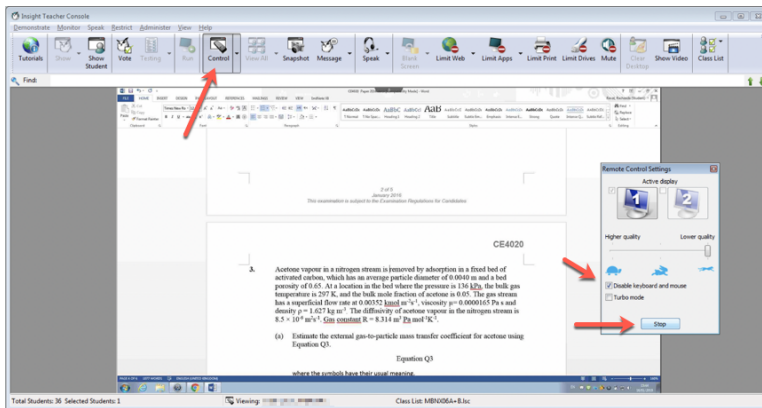
Select **Power On Student** from the **Administrator** menu and then click the **Power On** button on the dialog to start selected PCs.

Note some of the other menu options e.g. **Send Files to Student** and **Collect Files from Student** – see the Tutorials for more details of how these work.





This student (name blurred) is using Chrome



Note that the thumbnails have an icon showing which program the students are using and are identified by username.

Double-click on any thumbnail to see the student's screen full-screen.

See the Tutorials for details of how you can **control** their PC – for example to show them how to use a program feature, or to edit their work. You can also send them messages or take a snapshot of their screen.

Note the **Control** button and the checkbox where the student's keyboard and mouse is disabled (by default).

Click the **Stop** button to return to the thumbnail overview of all student PCs.